

AUTHENTIC & HANDCRAFTED

*Don Shula's*

AMERICAN KITCHEN



PRIVATE  
& GROUP  
DINING



# Don Shula's

Don Shula's American Kitchen features thoughtfully inspired American classics in a lively, modern and social setting. Our version of the scratch kitchen features diverse offerings created daily; expertly prepared beef and fresh fish, seasonal vegetables harvested at their peak and decadent desserts comprise the chef-driven menu. Wines, local and craft beers, and playful craft cocktails, too.

## ► Customized Dining Packages Available

You will find sample menus on the coming pages. We can also work with you to create customized dining packages upon request.

---

### Private & Group Dining + Catering

Our private & group dining spaces accommodate groups for a seated dinner. Parties over 30 guests are served family-style. The restaurant is also available to reserve in its entirety and can accommodate up to 270 guests.

Throwing a party at home or hosting a meeting at your office? Pre-order our catering platters – available for pick-up at the restaurant.

Prior to the signing of the contract, pricing subject to change based on market fluctuations.

### Location

Don Shula's American Kitchen  
2101 Hall of Fame Way NW  
Canton, OH 44708  
Tel 234-900-1972

---

#### CONTACT

specialevents@donshulasak.com

#### TELEPHONE

234-900-1972

# Private & Group Dining Spaces



## THE LEGENDS ROOM

The Legends Room is located on the main floor of the restaurant and offers total privacy. At almost 400 square feet, this is the perfect intimate space for smaller gatherings of up to 24 guests. Features large, flat screen TVs with AV capabilities.

## THE PERFECT SEASON

The Perfect Season is a unique dining space located on the mezzanine featuring floor to ceiling windows overlooking the Tom Benson Hall of Fame Stadium and a view of the Pro Football Hall of Fame.

This flexible event space seats up to 80 guests total or up to 120 for cocktails and hors d'oeuvres. This space can be made more intimate to suit your needs with the addition of rolling partitions and décor.

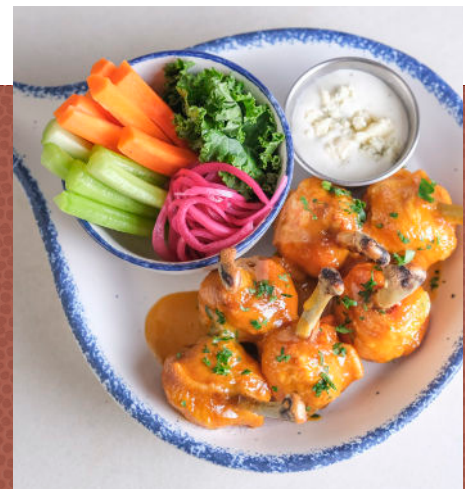


## GROUP DINING - PARTY SIZES

Parties over 12 guests require a Group Dining Menu. Guests may choose their menu from several offerings in all menu categories.

With the exception of the entrée, parties over 30 guests are served Family Style (shared, large plates for the table).

# Food & Beverage



Created with fresh ingredients from America's heartland, guests can enjoy a variety of offerings including family-style appetizers, individually plated entrées, classic and premium sides, and decadent family-style desserts.

Along with a wide selection of wines and local and craft beers, our innovative mixologists have created a playful cocktail list that celebrates Coach Shula's football legacy.



---

# Group Dining Menu

FOR GROUPS OVER 12 GUESTS UP TO 30 GUESTS

## HALL OF FAME PACKAGE - \$55 PER PERSON (LUNCH & DINNER)

**Cornbread** for the table

**Starter** - choose one:

Spinach & Artichoke Dip or Meatballs al Forno

**Soup or Salad** - choose one:

Caesar Salad, Market Salad, Cup of Soup

**Entrée** - choose up to three:

Pan Seared Atlantic Salmon, Chicken Picatta, White Cheddar & Corn Enchiladas, Smoked Baby Back Ribs

**Family-Style Sides** - choose up to three:

Coleslaw, Parmesan Polenta, Fingerling Potato Hash, Roasted Baby Carrots, Creamed Spinach, Side Salad, Roasted Brussels Sprouts, Bacon-Braised Green Beans, Mac & Cheese

**Dessert** - choose up to three:

Crème Brulee, Banana Bread Waffle, or Ice Cream Sundae (includes chocolate sauce, sprinkles, whipped cream, topped with cherry)

---

## MVP PACKAGE - \$45 PER PERSON (LUNCH & DINNER)

**Cornbread** for the table

**Soup or Salad** - choose one:

Caesar Salad, Market Salad, Cup of Soup

**Entrée** - choose up to three:

Pan Seared Atlantic Salmon, Chicken Picatta, White Cheddar & Corn Enchiladas

**Family-Style Sides** - choose up to two:

Coleslaw, Parmesan Polenta, Fingerling Potato Hash, Roasted Baby Carrots, Creamed Spinach, Side Salad

**Dessert** - choose up to two:

Crème Brulee, Banana Bread Waffle, or Ice Cream Sundae (includes chocolate sauce, sprinkles, whipped cream, topped with cherry)

All Group Dining Menus include coffee/tea/soft drinks and will be subject to sales tax and 20% gratuity.

Supplemental menu items available – see page 6.

# Group Dining Menu FOR GROUPS OVER 12 GUESTS UP TO 30 GUESTS

CONTINUED FROM PREVIOUS PAGE

## ALL PRO PACKAGE (LUNCH ONLY) - \$29 PERSON

**Soup or Salad** - choose one:

Caesar Salad, Market Salad, Cup of Soup

**Lunch Entrée** - choose up to three:

*Burger and sandwiches served with French fries*

DSAK Burger, Buttermilk Crispy Chicken Sandwich, California Cobb Salad, White Cheddar & Corn Enchiladas

### SUPPLEMENT YOUR DINING PACKAGE

10oz Long Island Strip +\$14

7oz Filet Mignon +\$29

Braised Short Rib +\$14

22oz Bone-In Ribeye +\$49

Salmon +\$9

Catch of the Day +\$12

Price Per Person

CUSTOMIZED  
DINING PACKAGES  
AVAILABLE UPON  
REQUEST



*Don Shula's*  
AMERICAN KITCHEN

---

# Family Style Menu

FOR GROUPS OVER 30 GUESTS

## CHAMPIONS PACKAGE - \$72 PER PERSON

**Cornbread** for the table

**Appetizers** - choose up to three:

Shrimp Cocktail, Spinach Dip, Smoked Jumbo Chicken Wings, Market Salad, Caesar Salad, Cobb Salad

**Entrées** - choose up to three:

Pan Seared Atlantic Salmon, Chicken Picatta, Smoked Baby Back Ribs, Double-Cut Pork Chop, White Cheddar & Corn Enchiladas, 10oz Long Island Strip

**Sides** - choose up to three:

Coleslaw, Parmesan Polenta, Fingerling Potato Hash, Roasted Baby Carrots, Creamed Spinach, Side Salad, Roasted Brussels Sprouts, Bacon-Braised Green Beans, Mac & Cheese

**Desserts** - choose up to three:

Crème Brulee, Peanut Butter Cremeaux, Banana Bread Waffle, or Ice Cream Sundae (includes chocolate sauce, sprinkles, whipped cream, topped with cherry)

---

## TOUCHDOWN PACKAGE - \$63 PER PERSON

**Cornbread** for the table

**Appetizers** - choose up to three:

Shrimp Cocktail, Spinach Dip, Smoked Jumbo Chicken Wings, Market Salad, Caesar Salad, Cobb Salad

**Entrées** - choose up to three:

Pan Seared Atlantic Salmon, Chicken Picatta, Smoked Baby Back Ribs, Double-Cut Pork Chop, White Cheddar & Corn Enchiladas

**Sides** - choose up to three:

Coleslaw, Parmesan Polenta, Fingerling Potato Hash, Roasted Baby Carrots, Creamed Spinach, Side Salad, Roasted Brussels Sprouts, Bacon-Braised Green Beans, Mac & Cheese

**Desserts** - choose up to two:

Crème Brulee, Peanut Butter Cremeaux, Banana Bread Waffle

All Family Style Menus include coffee/tea/soft drinks  
and will be subject to sales tax and 20% gratuity.

Supplemental menu items available - see page 8.

# Family Style Menu FOR GROUPS OVER 30 GUESTS

CONTINUED FROM PREVIOUS PAGE

## GRIDIRON PACKAGE - \$55 PER PERSON

**Appetizers** - choose up to two:

Spinach Dip, Smoked Jumbo Chicken Wings, Meatballs, Market Salad, Caesar Salad

**Entrées** - choose up to three:

Pan Seared Atlantic Salmon, Chicken Picatta, Smoked Baby Back Ribs, White Cheddar & Corn Enchiladas

**Sides** - choose up to two:

Coleslaw, Parmesan Polenta, Fingerling Potato Hash, Roasted Baby Carrots, Creamed Spinach, Side Salad

**Desserts** - choose up to two:

Crème Brulee, Peanut Butter Cremeaux, Banana Bread Waffle

### SUPPLEMENT YOUR DINING PACKAGE

10oz Long Island Strip +\$14

7oz Filet Mignon +\$29

Braised Short Rib +\$14

22oz Bone-In Ribeye +\$49

Salmon +\$9

Catch of the Day +\$12

Price Per Person

CUSTOMIZED  
DINING PACKAGES  
AVAILABLE UPON  
REQUEST



*Don Shula's*  
AMERICAN KITCHEN



---

# Hors d'Oeuvres

Passed service may include additional service charge.  
Minimum of 10 pieces per item.

## PRICED PER PIECE

### Vegetarian

Spinach & Artichoke Croquettes \$2  
Parmesan Polenta Croquettes \$2  
Beer Cheese Pretzel Bites \$2

### Seafood

Shrimp Cocktail \$4  
BBQ Shrimp \$5  
Shrimp & Lobster Club Slider \$5

### Meat

Mini Meatballs \$3  
Crispy Chicken Bites \$3  
Smoked Jumbo Chicken Wings \$3.50  
Meatball Sliders \$4.50  
Crispy Chicken Sliders \$4.50  
DSAK Sliders \$5

### Mini Desserts

Peanut Butter Cremeaux \$3.50  
Crème Brulee \$3.50  
Banana Bread Waffle \$3.50

---

# Platters & Stations

## PRICED PER PLATTER/SERVES 6-8 GUESTS

### Starters

Cornbread \$39  
Spinach & Artichoke Dip \$39  
Calamari \$58  
Meatballs & Polenta \$45  
Smoked Jumbo Chicken Wings \$65  
Chicken Tenders \$45  
Crudités \$25  
Tots \$28

### Salads

The Market \$35  
Caesar \$35  
California Cobb \$45  
Asian Grilled Shrimp Salad \$85

*Add to any salad:*

Chicken \$25  
Steak \$70  
Salmon \$85  
Shrimp \$60

### Entrées

Pan Seared Atlantic Salmon \$110  
Chicken Picatta \$85  
Campanelle Bolognese \$75  
Smoked Baby Back Ribs \$110  
Braised Short Rib \$180

### Sides

Coleslaw \$15  
Parmesan Polenta \$15  
Fingerling Potato Hash \$15  
Roasted Baby Carrots \$30  
Creamed Spinach \$30  
Roasted Brussels Sprouts \$60  
Bacon-Braised Green Beans \$45  
Mac & Cheese \$40

### Mini Desserts

*10 pieces per platter*  
Peanut Butter Cremeaux \$35  
Banana Bread Waffle \$35  
Crème Brulee \$35

**CUSTOMIZED  
DINING  
PACKAGES  
AVAILABLE**

---

# Customized Menu Options

Do you have a theme or favorite dishes in mind? Let us know – we’re happy to offer flexible menu options and customized packages.

## Examples of Available Options – OPTIONS NOT LIMITED TO THIS LIST

Baked Ziti	Mac & Cheese
Beef Bourguignon	
Beef Stroganoff	New England Lobster Rolls
Beef Wellington	Niçoise Salad with Seared Ahi Tuna
Burritos – Chicken, Steak, or Vegetable	
	Pastrami Reuben Sandwich
Campanelle Carbonara	Penne a la Vodka
Caramelized Onion Meatloaf	Philly Cheesesteak
Caribbean Style Curried Chicken & Rice	
Chicken and Dumplings	Red Wine Braised Short Ribs
Chicken Cacciatore	Ricotta Filled Manicotti
Chili con Carne	Ricotta Raviolis in Pomodoro Sauce
Chicken Cordon Bleu	
Chicken Florentine	Sausage & Peppers
Chicken Fried Steak & Country Gravy	Seafood Jambalaya
Chicken Marsala	Shrimp
Chicken Parmesan	Shrimp Fra Diavolo
Chili con Carne Nachos	Shrimp & Grits
Corned Beef and Cabbage	Shrimp Po' Boy
	Smoked Salmon
Fajitas – Chicken, Steak or Shrimp	Spaghetti & Meatballs
Fettuccine Alfredo	Steak Diane
Fried Chicken	Street Tacos – Carne Asada, Chicken Tinga or Baja
	Stuffed Peppers
Hand Carved Chateaubriand	Sweet & Tangy BBQ Chicken
Homemade Buttermilk Biscuit with Sausage Gravy	Swordfish Cioppino Stew
Homemade Chicken Pot Pie	
	Texas Style Smoked Beef Brisket
Jumbo All Beef Hot Dogs & All the Fixins'	Traditional Shepherd's Pie
Lasagna Bolognese	Quesadillas – Chicken or Carne Asada
Local Walleye Fish & Chips	

---

# Beverage Packages

## WINE, BEER, SPIRITS & SPECIALTY COCKTAILS

Servers will keep a running tab of all beverages consumed and will add to the final bill.

Please refer to our Beverage Menu insert for current selections.

**CUSTOMIZED BEVERAGE PACKAGES  
AVAILABLE UPON REQUEST**



*Don Shula's*  
AMERICAN KITCHEN

2101 Hall of Fame Way NW  
Canton, OH 44708  
Tel 234-900-1972

**CONTACT**

[specialevents@donshulasak.com](mailto:specialevents@donshulasak.com)