

AUTHENTIC & HANDCRAFTED

*Don Shula's*

AMERICAN KITCHEN



PRIVATE  
& GROUP  
DINING



# Don Shula's

Don Shula's American Kitchen features thoughtfully inspired American classics in a lively, modern and social setting. Our version of the scratch kitchen features diverse offerings created daily; expertly prepared beef and fresh fish, seasonal vegetables harvested at their peak and decadent desserts comprise the chef-driven menu. Wines, local and craft beers, and playful craft cocktails, too.

## ► Customized Dining Packages Available

You will find sample menus on the coming pages. We can also work with you to create customized dining packages upon request.

---

### Private & Group Dining + Catering

Our private & group dining spaces accommodate groups for a seated dinner. Parties over 30 guests are served family-style. The restaurant is also available to reserve in its entirety and can accommodate up to 270 guests.

Throwing a party at home or hosting a meeting at your office? Pre-order our catering platters – available for pick-up at the restaurant.

Prior to the signing of the contract, pricing subject to change based on market fluctuations.

### Location

Don Shula's American Kitchen  
2101 Hall of Fame Way NW  
Canton, OH 44708  
Tel 234-900-1972

---

#### CONTACT

Teagan Bari, Special Events Manager

#### EMAIL

privateevents@hofvillage.com

#### TELEPHONE

234-900-1972

# Private & Group Dining Spaces



## THE LEGENDS ROOM

The Legends Room is located on the main floor of the restaurant and offers total privacy. At almost 400 square feet, this is the perfect intimate space for smaller gatherings of up to 24 guests. Features large, flat screen TVs with AV capabilities.

## THE PERFECT SEASON

The Perfect Season is a unique dining space located on the mezzanine featuring floor to ceiling windows overlooking the Tom Benson Hall of Fame Stadium and a view of the Pro Football Hall of Fame.

This flexible event space seats up to 80 guests total or up to 120 for cocktails and hors d'oeuvres. This space can be made more intimate to suit your needs with the addition of rolling partitions and décor.

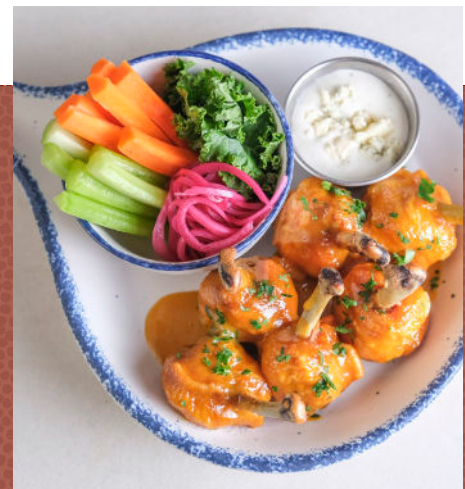


## GROUP DINING - PARTY SIZES

Parties over 12 guests require a Group Dining Menu. Guests may choose their menu from several offerings in all menu categories.

With the exception of the entrée, parties over 30 guests are served Family Style (shared, large plates for the table).

# Food & Beverage



Created with fresh ingredients from America's heartland, guests can enjoy a variety of offerings including family-style appetizers, individually plated entrées, classic and premium sides, and decadent family-style desserts.

Along with a wide selection of wines and local and craft beers, our innovative mixologists have created a playful cocktail list that celebrates Coach Shula's football legacy.



---

# Group Dining Menu

FOR GROUPS OVER 12 GUESTS UP TO 30 GUESTS

## HALL OF FAME PACKAGE - \$55 PER PERSON (LUNCH & DINNER)

**Cornbread** for the table

**Starter** - choose one:

Spinach & Artichoke Dip or Meatballs al Forno

**Soup or Salad** - choose one:

Caesar Salad, Market Salad, Cup of Soup

**Entrée** - choose up to three:

Pan Seared Atlantic Salmon, Gerber Amish Farms Roasted Chicken, White Cheddar & Corn Enchiladas, Smoked Baby Back Ribs

**Family-Style Sides** - choose up to three:

Coleslaw, Parmesan Polenta, Fingerling Potato Hash, Roasted Baby Carrots, Creamed Spinach, Side Salad, Corn Brûlée, Steamed Asparagus, Mac & Cheese

**Dessert** - choose up to three:

White Chocolate & Coconut Panna Cotta, Banana Bread Waffle, or Ice Cream Sundae (includes chocolate sauce, sprinkles, whipped cream, topped with cherry)

---

## MVP PACKAGE - \$45 PER PERSON (LUNCH & DINNER)

**Cornbread** for the table

**Soup or Salad** - choose one:

Caesar Salad, Market Salad, Cup of Soup

**Entrée** - choose up to three:

Pan Seared Atlantic Salmon, Gerber Amish Farms Roasted Chicken, White Cheddar & Corn Enchiladas

**Family-Style Sides** - choose up to two:

Coleslaw, Parmesan Polenta, Fingerling Potato Hash, Roasted Baby Carrots, Creamed Spinach, Side Salad

**Dessert** - choose up to two:

White Chocolate & Coconut Panna Cotta, Banana Bread Waffle, or Ice Cream Sundae (includes chocolate sauce, sprinkles, whipped cream, topped with cherry)

All Group Dining Menus include coffee/tea/soft drinks and will be subject to sales tax and 20% gratuity.

Supplemental menu items available - see page 6.

# Group Dining Menu FOR GROUPS OVER 12 GUESTS UP TO 30 GUESTS

CONTINUED FROM PREVIOUS PAGE

## ALL PRO PACKAGE (LUNCH ONLY) - \$29 PERSON

**Soup or Salad** - choose one:

Caesar Salad, Market Salad, Cup of Soup

**Lunch Entrée** - choose up to three:

*Burger and sandwiches served with French fries*

DSAK Burger, Buttermilk Crispy Chicken Sandwich, California Cobb Salad, White Cheddar & Corn Enchiladas

### SUPPLEMENT YOUR DINING PACKAGE

10oz Long Island Strip +\$14

7oz Filet Mignon +\$29

Braised Short Rib +\$14

22oz Bone-In Ribeye +\$49

Salmon +\$9

Catch of the Day +\$12

Price Per Person

CUSTOMIZED  
DINING PACKAGES  
AVAILABLE UPON  
REQUEST



*Don Shula's*  
AMERICAN KITCHEN

---

# Family Style Menu

FOR GROUPS OVER 30 GUESTS

## CHAMPIONS PACKAGE - \$72 PER PERSON

**Cornbread** for the table

**Appetizers** - choose up to three:

Shrimp Cocktail, Spinach Dip, Chicken Lollipops, Market Salad, Caesar Salad, Cobb Salad

**Entrées** - choose up to three:

Pan Seared Atlantic Salmon, Gerber Amish Farms Roasted Chicken, Smoked Baby Back Ribs, Double-Cut Pork Chop, White Cheddar & Corn Enchiladas, 10oz Long Island Strip

**Sides** - choose up to three:

Coleslaw, Parmesan Polenta, Fingerling Potato Hash, Roasted Baby Carrots, Creamed Spinach, Side Salad, Corn Brûlée, Steamed Asparagus, Mac & Cheese

**Desserts** - choose up to three:

White Chocolate & Coconut Panna Cotta, Peanut Butter Cremeaux, Banana Bread Waffle, or Ice Cream Sundae (includes chocolate sauce, sprinkles, whipped cream, topped with cherry)

---

## TOUCHDOWN PACKAGE - \$63 PER PERSON

**Cornbread** for the table

**Appetizers** - choose up to three:

Shrimp Cocktail, Spinach Dip, Chicken Lollipops, Market Salad, Caesar Salad, Cobb Salad

**Entrées** - choose up to three:

Pan Seared Atlantic Salmon, Gerber Amish Farms Roasted Chicken, Smoked Baby Back Ribs, Double-Cut Pork Chop, White Cheddar & Corn Enchiladas

**Sides** - choose up to three:

Coleslaw, Parmesan Polenta, Fingerling Potato Hash, Roasted Baby Carrots, Creamed Spinach, Side Salad, Corn Brûlée, Steamed Asparagus, Mac & Cheese

**Desserts** - choose up to two:

White Chocolate & Coconut Panna Cotta, Peanut Butter Cremeaux, Banana Bread Waffle

All Family Style Menus include coffee/tea/soft drinks and will be subject to sales tax and 20% gratuity.

Supplemental menu items available - see page 8.

# Family Style Menu FOR GROUPS OVER 30 GUESTS

CONTINUED FROM PREVIOUS PAGE

## GRIDIRON PACKAGE - \$55 PER PERSON

**Appetizers** - choose up to two:

Spinach Dip, Chicken Lollipops, Meatballs, Market Salad, Caesar Salad

**Entrées** - choose up to three:

Pan Seared Atlantic Salmon, Gerber Amish Farms Roasted Chicken, Smoked Baby Back Ribs, White Cheddar & Corn Enchiladas

**Sides** - choose up to two:

Coleslaw, Parmesan Polenta, Fingerling Potato Hash, Roasted Baby Carrots, Creamed Spinach, Side Salad

**Desserts** - choose up to two:

White Chocolate & Coconut Panna Cotta, Peanut Butter Cremeaux, Banana Bread Waffle

### SUPPLEMENT YOUR DINING PACKAGE

10oz Long Island Strip +\$14

7oz Filet Mignon +\$29

Braised Short Rib +\$14

22oz Bone-In Ribeye +\$49

Salmon +\$9

Catch of the Day +\$12

Price Per Person

CUSTOMIZED  
DINING PACKAGES  
AVAILABLE UPON  
REQUEST



*Don Shula's*  
AMERICAN KITCHEN



---

# Hors d'Oeuvres

Passed service may include additional service charge.  
Minimum of 10 pieces per item.

## PRICED PER PIECE

### Vegetarian

- Spinach & Artichoke Croquettes \$2
- Parmesan Polenta Croquettes \$2
- Beer Cheese Pretzel Bites \$2

### Seafood

- Shrimp Cocktail \$4
- BBQ Shrimp \$5
- Shrimp & Lobster Club Slider \$5

### Meat

- Mini Meatballs \$3
- Crispy Chicken Bites \$3
- Chicken Lollipops \$3.50
- Meatball Sliders \$4.50
- Crispy Chicken Sliders \$4.50
- DSAK Sliders \$5

### Mini Desserts

- Peanut Butter Cremeaux \$3.50
- White Chocolate & Coconut  
Panna Cotta \$3.50
- Banana Bread Waffle \$3.50

---

# Platters & Stations

## PRICED PER PLATTER/SERVES 6-8 GUESTS

### Starters

- Cornbread \$39
- Spinach & Artichoke Dip \$39
- Calamari \$58
- Meatballs & Polenta \$45
- Chicken Lollipops \$65
- Chicken Tenders \$45
- Crudités \$25
- Tots \$28

### Salads

- The Market \$35
- Caesar \$35
- California Cobb \$45
- Asian Grilled Shrimp Salad \$85

*Add to any salad:*

- Chicken \$25
- Steak \$70
- Salmon \$85
- Shrimp \$60

### Entrées

- Pan Seared Atlantic Salmon \$110
- Gerber Amish Farms  
Roasted Chicken \$85
- Campanelle Bolognese \$75
- Smoked Baby Back Ribs \$110
- Braised Short Rib \$180

### Sides

- Coleslaw \$15
- Parmesan Polenta \$15
- Fingerling Potato Hash \$15
- Roasted Baby Carrots \$30
- Creamed Spinach \$30
- Corn Brûlée \$60
- Steamed Asparagus \$45
- Mac & Cheese \$40

### Mini Desserts

*10 pieces per platter*

- Peanut Butter Cremeaux \$35
- Banana Bread Waffle \$35
- White Chocolate & Coconut  
Panna Cotta \$35

**CUSTOMIZED  
DINING  
PACKAGES  
AVAILABLE**

---

# Customized Menu Options

Do you have a theme or favorite dishes in mind? Let us know – we’re happy to offer flexible menu options and customized packages.

## Examples of Available Options – OPTIONS NOT LIMITED TO THIS LIST

|  |   |
|--|---|
| Baked Ziti                                     | Mac & Cheese                                      |
| Beef Bourguignon                               |   |
| Beef Stroganoff                                | New England Lobster Rolls                         |
| Beef Wellington                                | Niçoise Salad with Seared Ahi Tuna                |
| Burritos – Chicken, Steak, or Vegetable        |   |
|  | Pastrami Reuben Sandwich                          |
| Campanelle Carbonara                           | Penne a la Vodka                                  |
| Caramelized Onion Meatloaf                     | Philly Cheesesteak                                |
| Caribbean Style Curried Chicken & Rice         |   |
| Chicken and Dumplings                          | Red Wine Braised Short Ribs                       |
| Chicken Cacciatore                             | Ricotta Filled Manicotti                          |
| Chili con Carne                                | Ricotta Raviolis in Pomodoro Sauce                |
| Chicken Cordon Bleu                            |   |
| Chicken Florentine                             | Sausage & Peppers                                 |
| Chicken Fried Steak & Country Gravy            | Seafood Jambalaya                                 |
| Chicken Marsala                                | Shrimp  |
| Chicken Parmesan                               | Shrimp Fra Diavolo                                |
| Chili con Carne Nachos                         | Shrimp & Grits                                    |
| Corned Beef and Cabbage                        | Shrimp Po' Boy                                    |
|  | Smoked Salmon                                     |
| Fajitas – Chicken, Steak or Shrimp             | Spaghetti & Meatballs                             |
| Fettuccine Alfredo                             | Steak Diane                                       |
| Fried Chicken                                  | Street Tacos – Carne Asada, Chicken Tinga or Baja |
|  | Stuffed Peppers                                   |
| Hand Carved Chateaubriand                      | Sweet & Tangy BBQ Chicken                         |
| Homemade Buttermilk Biscuit with Sausage Gravy | Swordfish Cioppino Stew                           |
| Homemade Chicken Pot Pie                       |   |
|  | Texas Style Smoked Beef Brisket                   |
| Jumbo All Beef Hot Dogs & All the Fixins'      | Traditional Shepherd's Pie                        |
|  |   |
| Lasagna Bolognese                              | Quesadillas – Chicken or Carne Asada              |
| Local Walleye Fish & Chips                     |   |

---

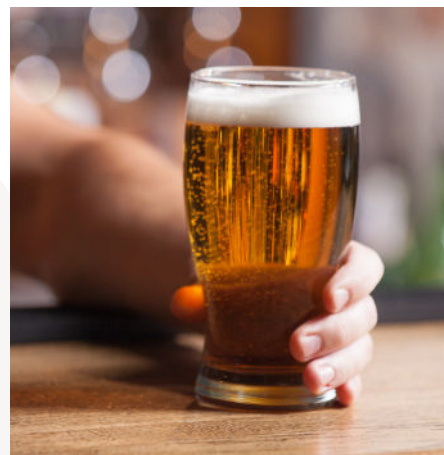
# Beverage Packages

## WINE, BEER, SPIRITS & SPECIALTY COCKTAILS

Servers will keep a running tab of all beverages consumed and will add to the final bill.

Please refer to our Beverage Menu insert for current selections.

**CUSTOMIZED BEVERAGE PACKAGES  
AVAILABLE UPON REQUEST**



*Don Shula's*  
AMERICAN KITCHEN

2101 Hall of Fame Way NW  
Canton, OH 44708  
Tel 234-900-1972

**CONTACT**

Teagan Bari, Special Events Manager  
[privateevents@hofvillage.com](mailto:privateevents@hofvillage.com)